

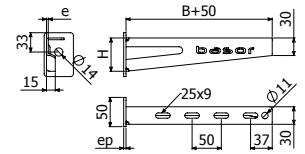


SHL

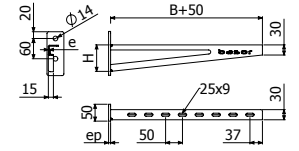


	B		e	ep	H		CTA		GC	
	mm	inch	mm	mm	mm	inch	kg	lb	REF.	kg/ud
SHL 100	100	4"	1,5	4	47	1 6/7"	205	450	2/6866	0,33
SHL 150	150	6"	1,5	4	53	2"	205	450	2/6867	0,39
SHL 200	200	8"	1,5	4	58	2 2/7"	205	450	2/6868	0,51
SHL 300	300	12"	1,5	6	68	2 2/3"	250	550	2/6869	0,69
SHL 400	400	16"	1,5	6	79	3 1/9"	250	550	2/6870	0,98
SHL 500	500	20"	2	6	89	3 1/2"	250	550	2/6871	1,16
SHL 600	600	24"	2	6	100	4"	250	550	2/6872	1,51

- B1 (2/4356-EZ / 2/6826-GC)
- CTBF (2/4362-EZ / 2/7132-GC)
- BFE (2/0863-GC) + B2 (2/6792-GC)

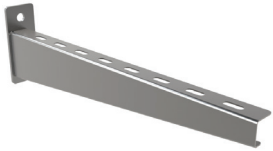


SHL 100/150/200



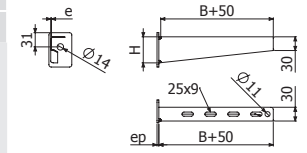
SHL 300/400/500/600

SHL

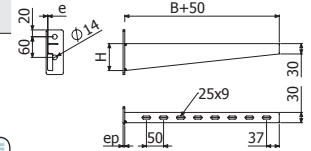


	B		e	ep	H		CTA		i304		i316	
	mm	inch	mm	mm	mm	inch	kg	lb	REF.	kg/ud	REF.	kg/ud
SHL 100	100	4"	1,5	4	47	1 6/7"	205	450	2/17141	0,30	2/18449	0,30
SHL 150	150	6"	1,5	4	53	2"	205	450	2/17142	0,35	2/18450	0,35
SHL 200	200	8"	1,5	4	58	2 2/7"	205	450	2/17143	0,46	2/18451	0,46
SHL 300	300	12"	1,5	6	68	2 2/3"	250	550	2/17144	0,62	2/18452	0,62
SHL 400	400	16"	1,5	6	79	3 1/9"	250	550	2/17145	0,88	2/18453	0,88
SHL 500	500	20"	2	6	89	3 1/2"	250	550	2/17146	1,04	2/18454	1,04
SHL 600	600	24"	2	6	100	4"	250	550	2/17147	1,36	2/18455	1,36

- B1 (2/4925 i304 // 2/18388 i316)
- CTBF (2/4923 i304 // 2/8229 i316)
- BFE (2/3293 i304 // 2/18530 i316) + B2 (2/5392 i304 // 2/18443 i316)



SHL 100-200



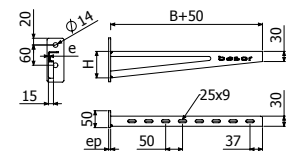
SHL 300-600

SHR

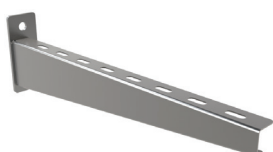


	B		e	ep	H		CTA		GC	
	mm	inch	mm	mm	mm	inch	kg	lb	REF.	kg/ud
SHR 300	300	12"	2,5	6	68	2 2/3"	480	1058	2/5525	0,93
SHR 400	400	16"	2,5	6	79	3 1/9"	365	804	2/1023	1,16
SHR 500	500	20"	2,5	6	89	3 1/2"	300	661	2/1024	1,47
SHR 600	600	24"	2,5	6	100	4"	285	628	2/1025	1,75
SHR 700	700	28"	2,5	6	110	4 1/3"	270	595	2/1026	2,10
SHR 800	800	32"	2,5	6	120	4 5/7"	265	584	2/1027	2,41

- B1 (2/4356-EZ / 2/6826-GC)
- CTBF (2/4362-EZ / 2/7132-GC)
- BFE (2/0863-GC) + B2 (2/6792-GC)



SHR



	B		e	ep	H		CTA		i304		i316	
	mm	inch	mm	mm	mm	inch	kg	lb	REF.	kg/ud	REF.	kg/ud
SHR 300	300	12"	2,5	6	68	2 2/3"	480	1058	2/18122	0,89	2/18456	0,89
SHR 400	400	16"	2,5	6	79	3 1/9"	365	804	2/18123	1,10	2/18457	1,10
SHR 500	500	20"	2,5	6	89	3 1/2"	300	661	2/18124	1,40	2/18458	1,40
SHR 600	600	24"	2,5	6	100	4"	285	628	2/18125	1,67	2/18459	1,67
SHR 700	700	28"	2,5	6	110	4 1/3"	270	595	2/18126	2,00	2/18460	2,00
SHR 800	800	32"	2,5	6	120	4 5/7"	265	584	2/18127	2,30	2/18461	2,30

- B1 (2/4925 i304 // 2/18388 i316)
- CTBF (2/4923 i304 // 2/8229 i316)
- BFE (2/3293 i304 // 2/18530 i316) + B2 (2/5392 i304 // 2/18443 i316)

